

**BMP2 Antibody**  
**Purified Rabbit Polyclonal Antibody (Pab)**  
**Catalog # AP21447a****Specification**

---

**BMP2 Antibody - Product Information**

Application	WB,E
Primary Accession	<a href="#">P12643</a>
Reactivity	Human, Rat
Host	Rabbit
Clonality	polyclonal
Isotype	Rabbit IgG
Calculated MW	44702

**BMP2 Antibody - Additional Information****Gene ID** 650**Other Names**

Bone morphogenetic protein 2, BMP-2, Bone morphogenetic protein 2A, BMP-2A, BMP2, BMP2A

**Target/Specificity**

This BMP2 antibody is generated from a rabbit immunized with a recombinant protein of human BMP2.

**Dilution**

WB~~1:2000

E~~Use at an assay dependent concentration.

**Format**

Purified polyclonal antibody supplied in PBS with 0.09% (W/V) sodium azide. This antibody is purified through a protein A column, followed by peptide affinity purification.

**Storage**

Maintain refrigerated at 2-8°C for up to 2 weeks. For long term storage store at -20°C in small aliquots to prevent freeze-thaw cycles.

**Precautions**

BMP2 Antibody is for research use only and not for use in diagnostic or therapeutic procedures.

**BMP2 Antibody - Protein Information****Name** BMP2**Synonyms** BMP2A**Function** Growth factor of the TGF-beta superfamily that plays essential roles in many developmental processes, including cardiogenesis, neurogenesis, and osteogenesis

(PubMed:[18436533](#), PubMed:[24362451](#), PubMed:[31019025](#)). Induces cartilage and bone formation (PubMed:[3201241](#)). Initiates the canonical BMP signaling cascade by associating with type I receptor BMPRI1A and type II receptor BMPRI2 (PubMed:[15064755](#), PubMed:[17295905](#), PubMed:[18436533](#)). Once all three components are bound together in a complex at the cell surface, BMPRI2 phosphorylates and activates BMPRI1A (PubMed:[7791754](#)). In turn, BMPRI1A propagates signal by phosphorylating SMAD1/5/8 that travel to the nucleus and act as activators and repressors of transcription of target genes. Also acts to promote expression of HAMP, via the interaction with its receptor BMPRI1A/ALK3 (PubMed:[31800957](#)). Can also signal through non-canonical pathways such as ERK/MAP kinase signaling cascade that regulates osteoblast differentiation (PubMed:[16771708](#), PubMed:[20851880](#)). Also stimulates the differentiation of myoblasts into osteoblasts via the EIF2AK3-EIF2A-ATF4 pathway by stimulating EIF2A phosphorylation which leads to increased expression of ATF4 which plays a central role in osteoblast differentiation (PubMed:[24362451](#)). Acts as a positive regulator of odontoblast differentiation during mesenchymal tooth germ formation, expression is repressed during the bell stage by MSX1-mediated inhibition of CTNNB1 signaling (By similarity).

### Cellular Location

Secreted.

### Tissue Location

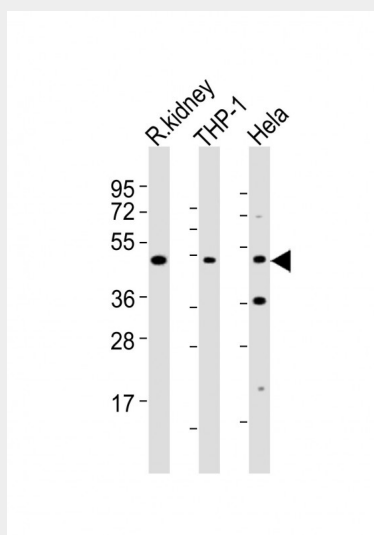
Particularly abundant in lung, spleen and colon and in low but significant levels in heart, brain, placenta, liver, skeletal muscle, kidney, pancreas, prostate, ovary and small intestine

### BMP2 Antibody - Protocols

Provided below are standard protocols that you may find useful for product applications.

- [Western Blot](#)
- [Blocking Peptides](#)
- [Dot Blot](#)
- [Immunohistochemistry](#)
- [Immunofluorescence](#)
- [Immunoprecipitation](#)
- [Flow Cytometry](#)
- [Cell Culture](#)

### BMP2 Antibody - Images



All lanes : Anti-BMP2 Antibody at 1:2000 dilution Lane 1: rat kidney lysates Lane 2: THP-1 whole cell lysates Lane 3: Hela whole cell lysates Lysates/proteins at 20 µg per lane. Secondary Goat Anti-Rabbit IgG, (H+L), Peroxidase conjugated at 1/10000 dilution Predicted band size : 45 kDa Blocking/Dilution buffer: 5% NFDM/TBST.

**BMP2 Antibody - Background**

Induces cartilage and bone formation.

**BMP2 Antibody - References**

Wozney J.M.,et al.Science 242:1528-1534(1988).  
Shore E.M.,et al.Submitted (DEC-1997) to the EMBL/GenBank/DDBJ databases.  
Deloukas P.,et al.Nature 414:865-871(2001).  
Yeung B.,et al.Anal. Chem. 69:2510-2516(1997).  
Yanagita M.,et al.Biochem. Biophys. Res. Commun. 316:490-500(2004).